



## Solano EyeCare Optometric Professionals

Thank you for choosing our practice to protect the health of your eyes!

Vision threatening diseases such as glaucoma, macular degeneration and diabetic retinopathy often have no outward signs or symptoms in the early stages, so our practice has begun using state-of-the-art technology to assess the health of your eyes.

The WellnessExam™ is a quick, non-invasive scan that allows our doctors to see beneath the surface of your retina. This unique technology can help our doctors detect vision threatening and systemic diseases in their very early stages, when they are most treatable.

As part of your pre-exam testing, you can choose to have the WellnessExam, which your doctor will review with you during your examination today. The \$39 charge is not covered by your vision or medical insurance, so this would be added into the cost of your visit today. Any questions you have about WellnessExam and the results of the test can be discussed with the doctor during your examination.

Yes, I DO want the WellnessExam. Sign \_\_\_\_\_ Date \_\_\_\_\_

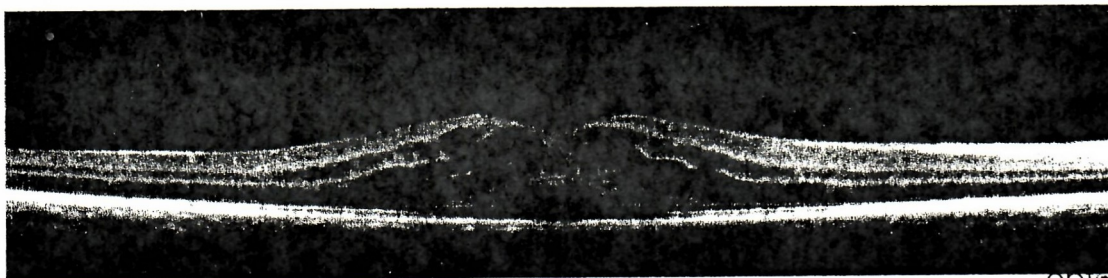
No, I do NOT want the WellnessExam. Sign \_\_\_\_\_ Date \_\_\_\_\_

### WellnessExam examples:

Healthy Retina



Unhealthy Retina



optovue